

Service
Service
Service



Service Manual

30-83 KHz

TABLE OF CONTENTS

Description	Page	Description	Page
Table Of Contents.....	1	5.2.Electrical Block Diagram.....	16
Revision List.....	2	6.Schematic.....	19
Important Safety Notice.....	3	6.1Main Board.....	19
1.Monitor Specification.....	4	6.2Power Board.....	23
2.LCD Monitor Description.....	5	7.PCB Layout.....	27
3.Operation Instruction.....	6	7.1.Main Board.....	27
3.1.General Instructions.....	6	7.2.Key Board.....	29
3.2.Control Button.....	6	7.3.Power Board.....	30
3.3.OSD Menu.....	7	8.Maintainability.....	32
4.Input/Output Specification.....	10	8.1.Equipments and Tools Requirement.....	32
4.1.Input Signal Connector.....	10	8.2.Trouble Shooting.....	33
4.2.Factory Preset Display Modes.....	11	9.White-Balance, Luminance adjustment.....	41
4.3.Power Supply Requirements.....	11	10.Monitor Explode View.....	43
4.4.Panel Specification.....	12	11.BOM List.....	44
5.Block Diagram.....	14	12.Different Parts List.....	71
5.1.Software Flow Chart.....	14		

SAFETY NOTICE

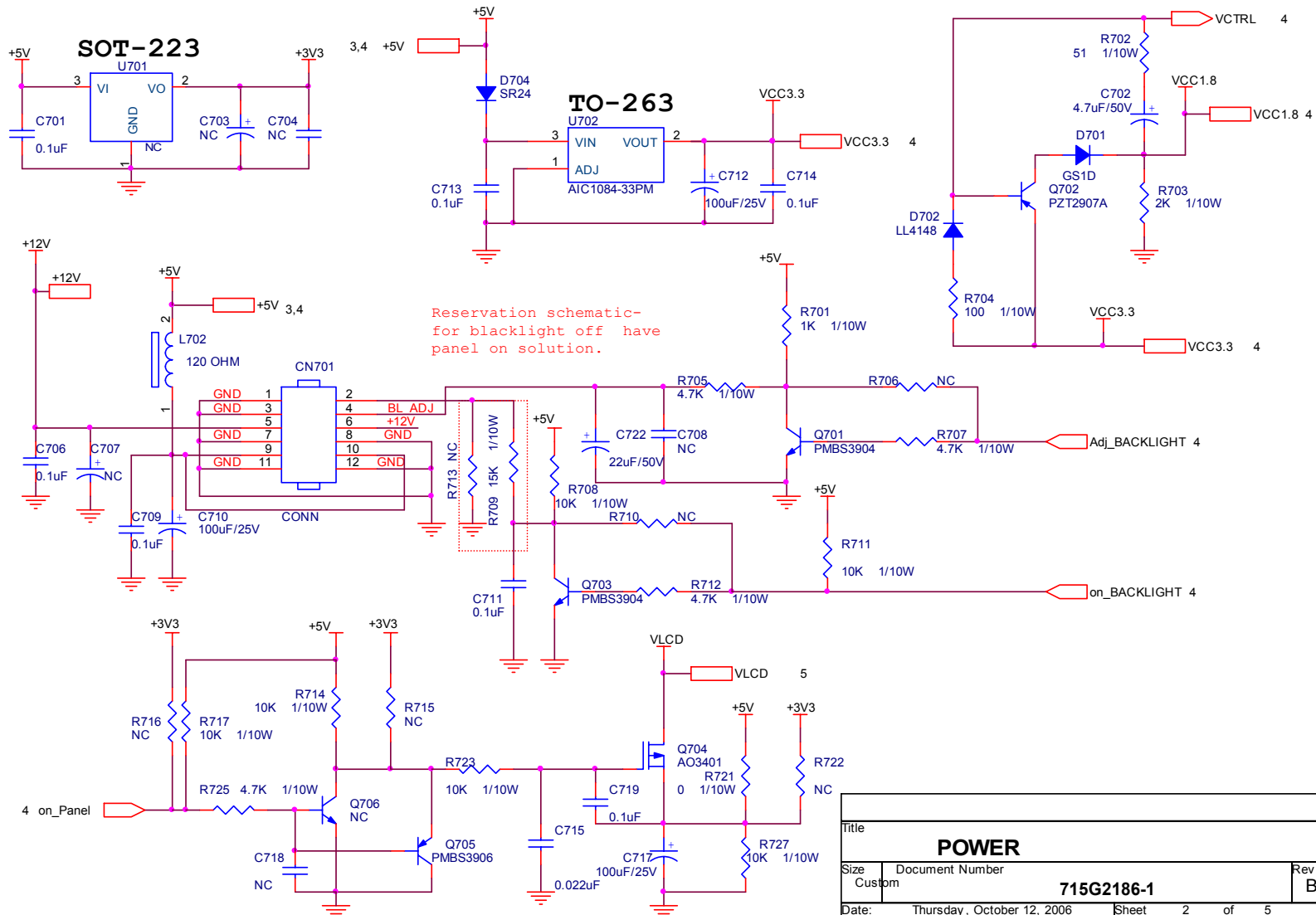
ANY PERSON ATTEMPTING TO SERVICE THIS CHASSIS MUST FAMILIARIZE HIMSELF WITH THE CHASSIS AND BE AWARE OF THE NECESSARY SAFETY PRECAUTIONS TO BE USED WHEN SERVICING ELECTRONIC EQUIPMENT CONTAINING HIGH VOLTAGES.

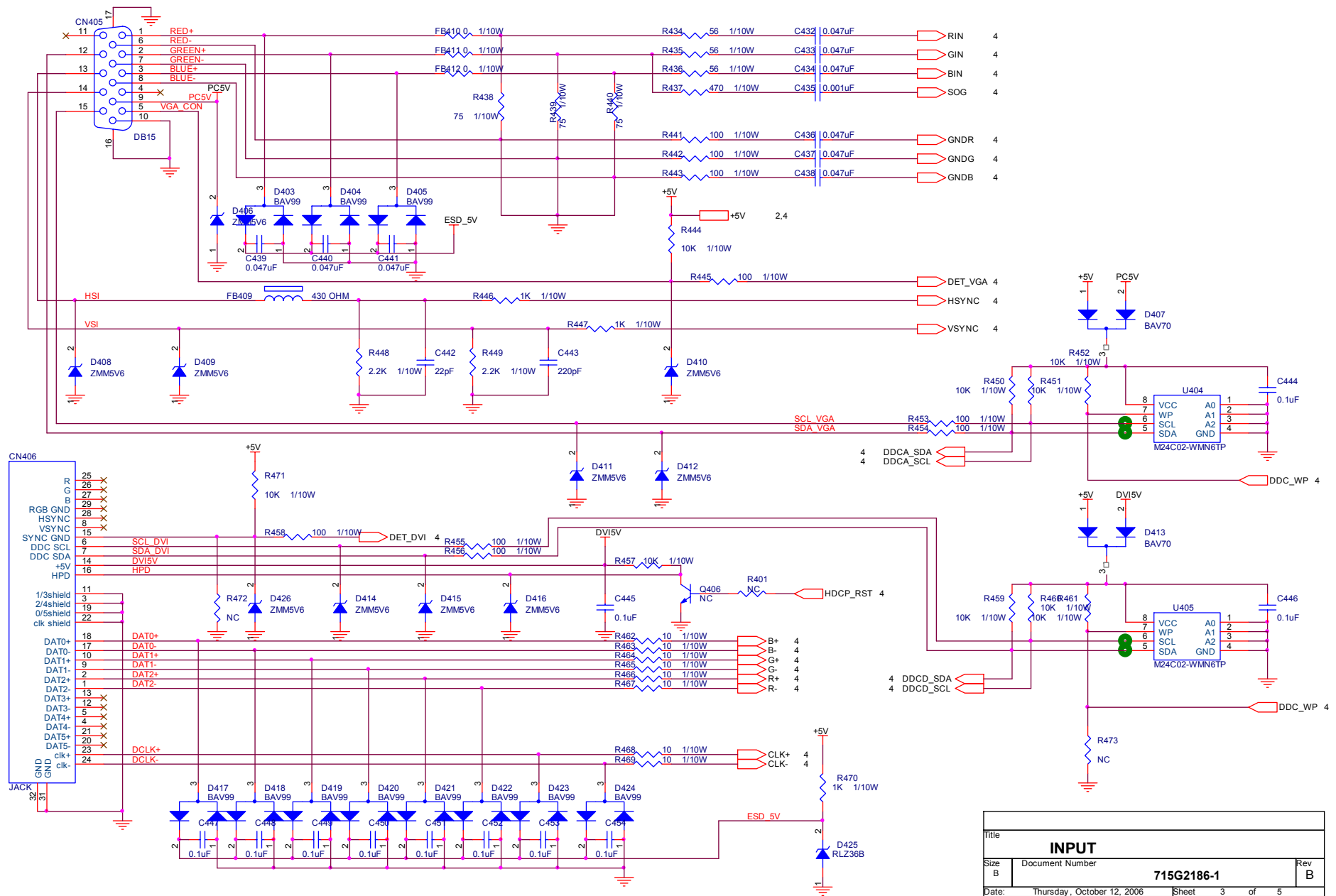
CAUTION: USE A SEPARATE ISOLATION TRANSFORMER FOR THIS UNIT WHEN SERVICING

6. Schematic

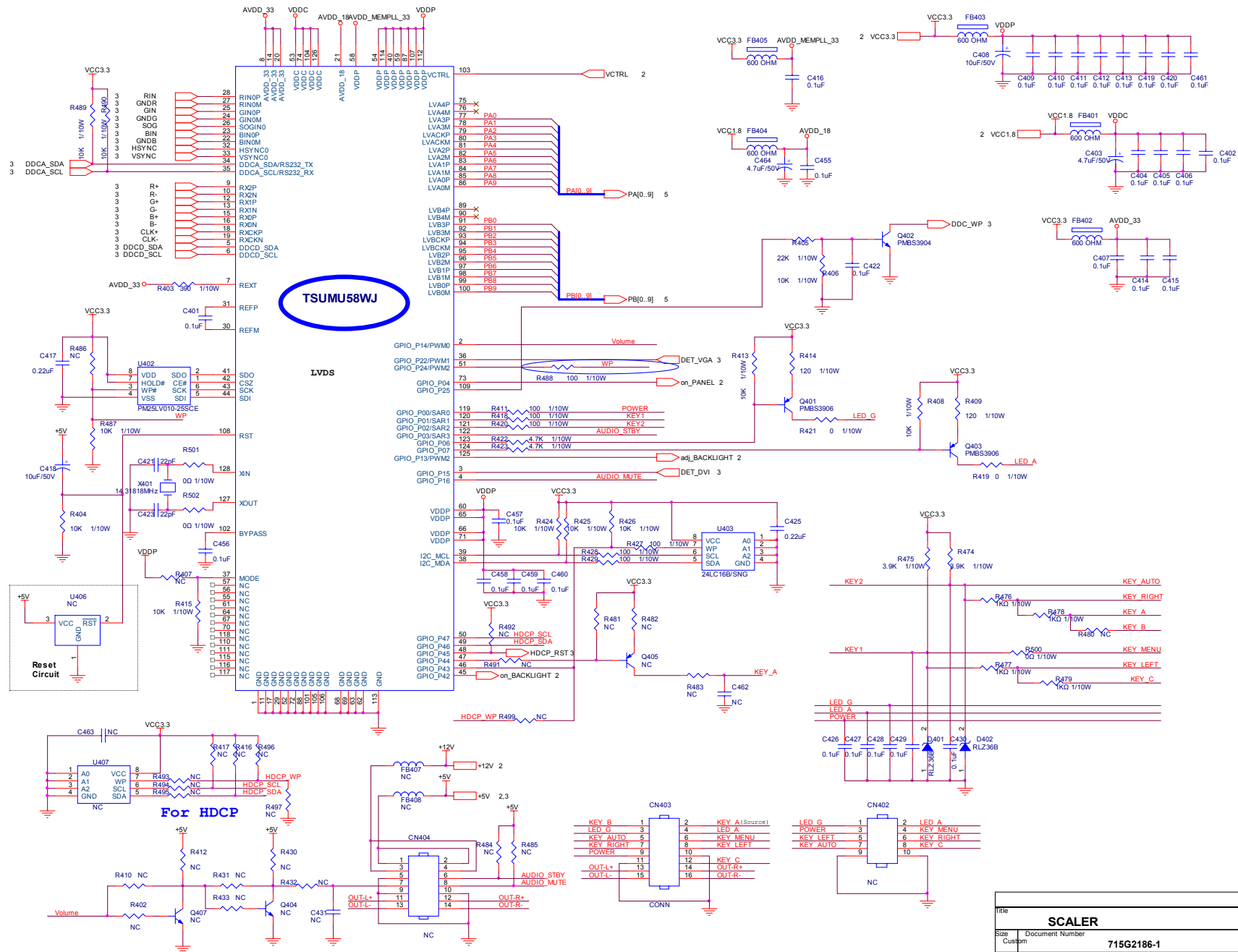
6.1 Main Board

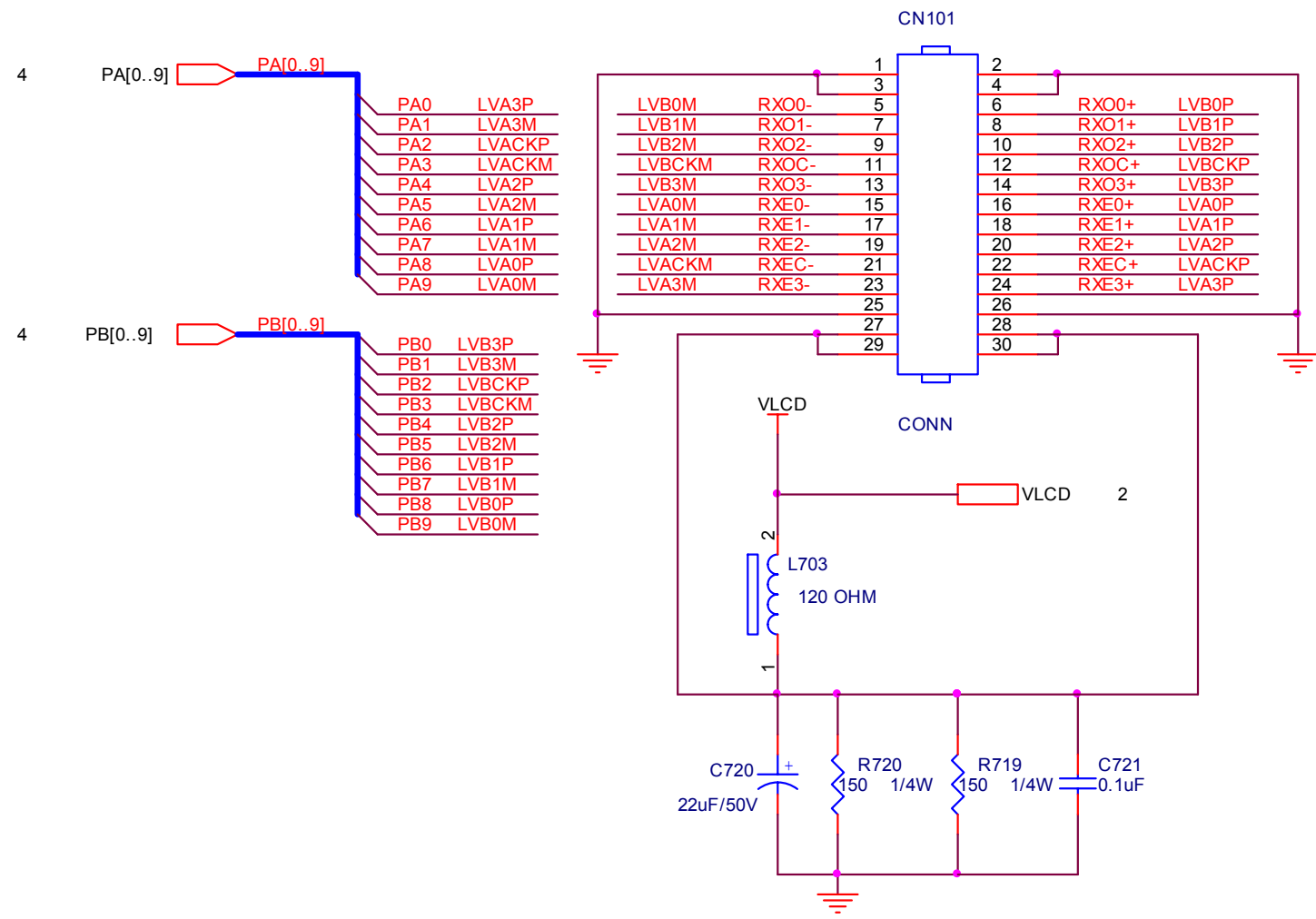
715G2186-1





Title			
INPUT			
Size	Document Number	715G2186-1	Rev B
Date:	Thursday, October 12, 2006	Sheet 3 of 5	

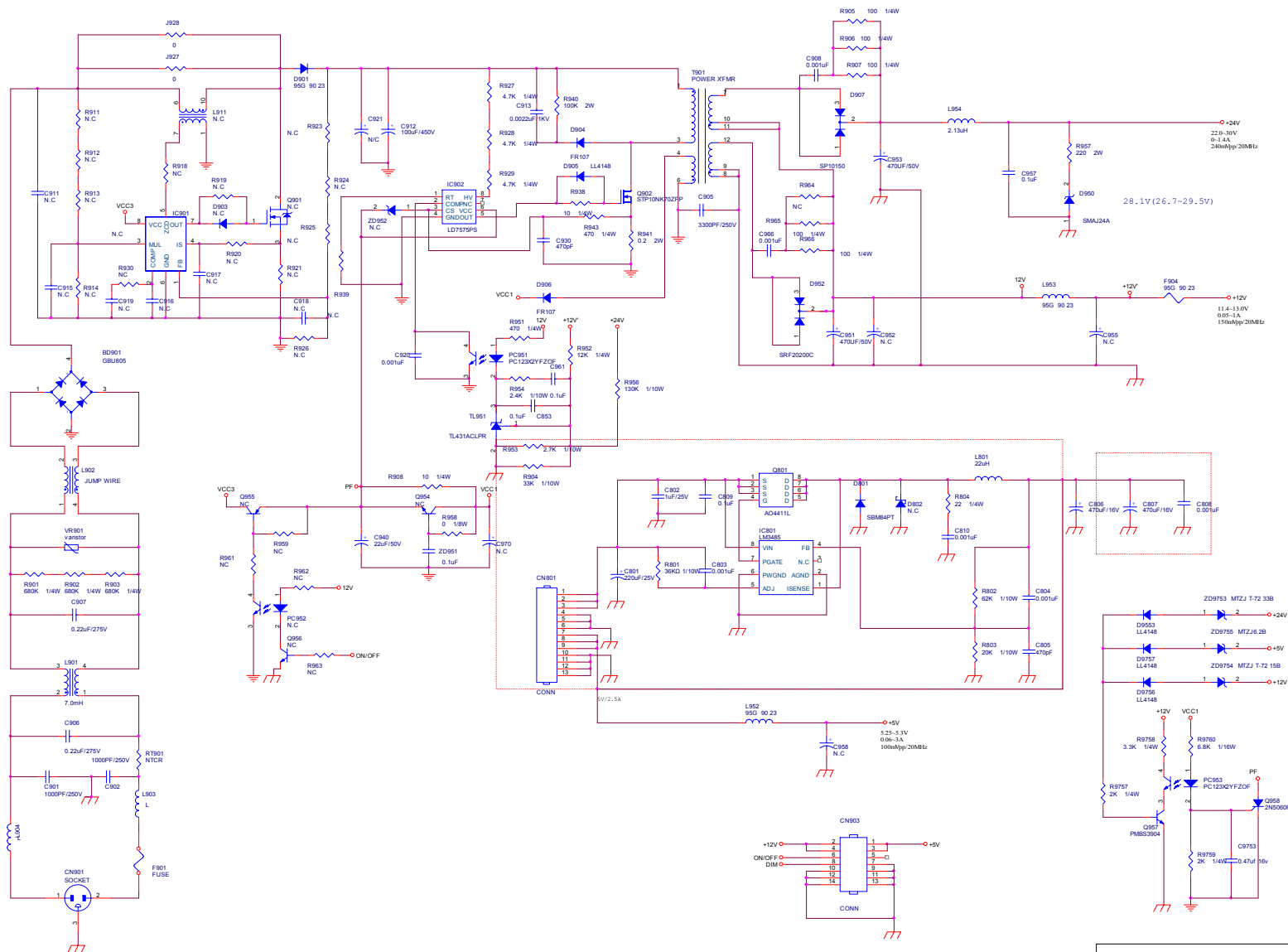




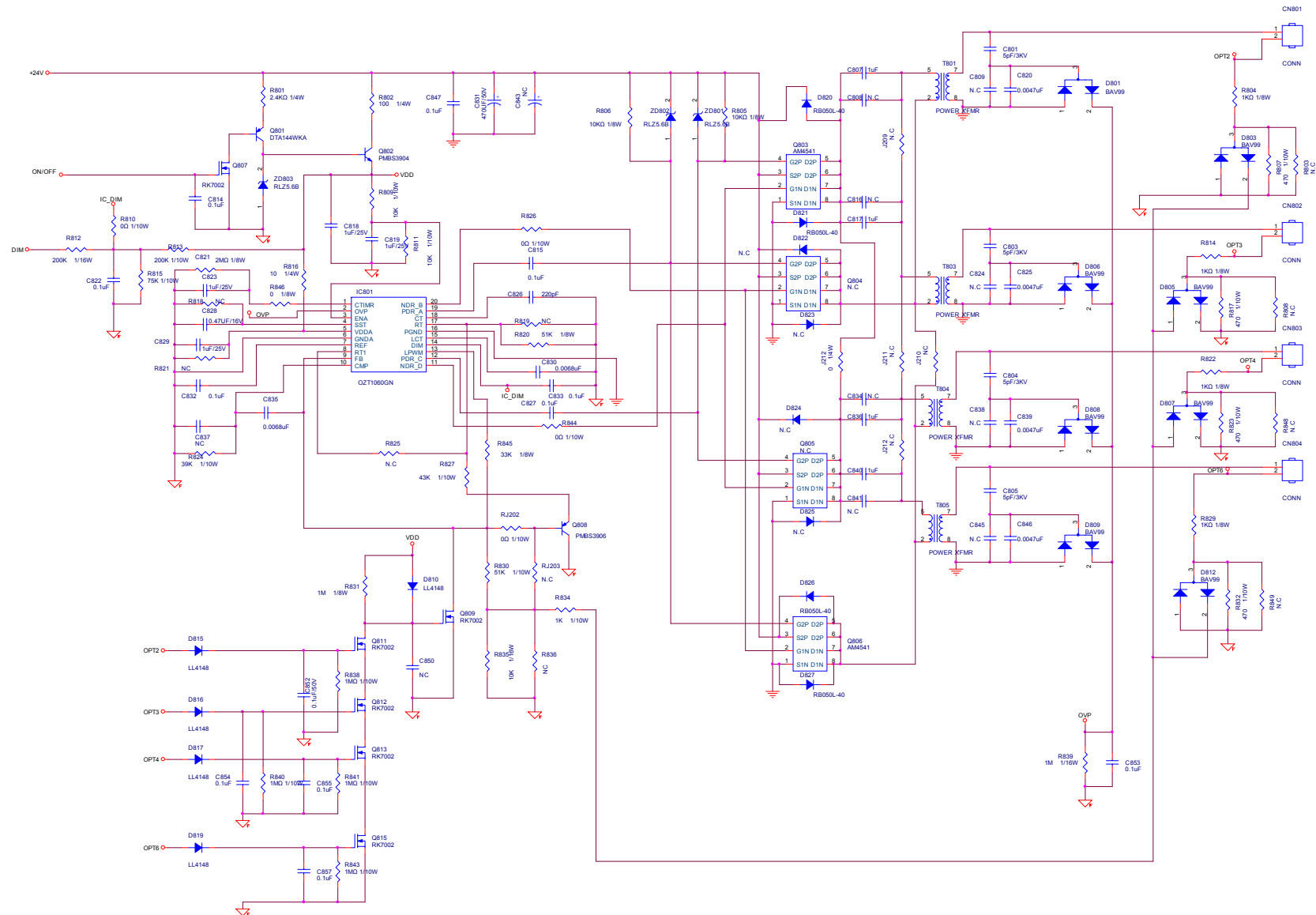
Title		
PANEL INTERFACE		
Size A	Document Number 715G2186-1	Rev B
Date:	Thursday, October 12, 2006	Sheet 5 of 5

6.2 Power Board

715G2101-1A



22" LCD Monitor			
File	Document Number	Rev	
	G2101-1-X-X-1-060815	1	
Date	1/25/2007	Author	1/25/2007



File	<Title>	<RevCode>
Size	Document Number	Rev
C	<Doc> G2101-1-X-X-1-060815	1
Date	Copyright August 16, 2005	Item 1 of 3

